

# Samonas TRAINING CONCEPT

Features	Practical-Experience student/ certified	Samonas Knowledge	Theoretical Knowledge	Samonas Training Level
teamPower SLP's mySuccess SLP's kidTalent SLP's	0/3 SLP	Sy1 + SILC lite	Th1	I
universalModules	0/3 SLP	Sy1 + SILC	Th1	I
+ package Option	3/6 SLP	Sy2a	Th2a	II
+ manual LiProfile	3/6 SLP	Sy2b	Th2b	II
Advanced SLP's	6/10 SLP	Sy3	Th3	III
+ man SpectrAct.	10/15 SLP	Sy4	Th4	IV

**SLP:** Samonas Listening Plan

**Student:** Professional implementation of Samonas starts with matriculation in S.I.L.C. (see other side for details).

**Certification:** Requires the practical experience, Samonas System knowledge and theoretical knowledge stated above.

**teamPower, mySuccess, kidTalent:** Samonas creates the SLP based on input provided by the practitioner - the practitioner implements the SLP - Samonas adjusts the SLP to the client's needs.

**universalModules:** The practitioner creates the SLP based on sample cases - the practitioner implements the SLP - the practitioner adjusts the SLP to the client's needs.

**Advanced SLP's:** The practitioner creates the SLP from scratch, without presets - the practitioner implements the SLP - the practitioner adjusts the SLP to the client's needs.

Daily listening time and optimal level of Spectral activation is automatically calculated based on the listeners rating of the listening experience.

**+ Package Option, + Manual Listening Profile and + Manual Spectral Activation** are additional options for an experienced user.

<http://www.samonasTraining.com/trainingConcept>

<http://www.samonasTraining.com> <http://www.samonasTeamPower.com>

<http://www.samonasMySuccess.com> <http://www.samonasKidTalent.com>

## 4-day Training Objectives

- Qualification and Authorization for immediate use of Samonas in professional context with a client (student status)
- Theoretical and system-knowledge modules to qualify for Samonas Training Level I - 4 (Additional practical experience is necessary for certification)
- Theoretical knowledge: Facts about auditory training, decision criteria for deciding when use auditory training as therapeutic tool based on neurological evidence, knowledge of auditory processing and functions, skills and organs related to the auditory system.
- Key elements: Understanding that effective elements of music, emotional value of music, reference point based listening, bilateral integration, spectral activation of sounds and individualized listening plans with user-specific intensity are key elements of advanced auditory training
- Samonas skills and knowledge: Provides knowledge about 4 different types of Samonas Implementation, their features, differences and common elements. Allows the practitioner to begin using Samonas Auditory Training immediately after the training in a guided and almost fool-proof environment. It accomplishes this task by applying the practical knowledge gained through the course of the training
- Decision criteria: Understanding options and limitations of Samonas in relation to the targeted challenge, proficiency and experience of the supervising professional and the ability of the client to implement and monitor listening

## THE PRESENTERS

Ingo Steinbach, Developer of Samonas  
More details: <http://www.samonas.com/Pres/IngoSteinbach>

Suvi Pitkola, Pediatric Occupational Therapist, MSocSc  
More details: <http://www.samonas.com/Pres/SuviPitkola>

## TRAINING DATES & LOCATIONS

Go On-line: <http://www.samonasTraining.com/training>

Send email: [trainingInfo@samonas.com](mailto:trainingInfo@samonas.com)

By the leader in technology and quality:

# Samonas Overview Training

## Four TYPES of Training:

1-day ENTRY training

2-day CORE training

1-day ADVANCED training

4-day ROYAL training

Includes Entry, Core and Advanced training

## Four training LEVEL

See table on the left

## Four TYPES of implementation

Pease turn page

Designed and run by  
INGO STEINBACH - Founder of Samonas

GoTo web-version of this flyer with active links:

<http://www.samonas.com/overviewTrainingflyer.pdf>

Sponsored by: Samonas Training inc.

Balestier Towers, 207 Balestier Road #01-01/03, S329 683

Phone: +65 6300 9510 Fax +65 6300 9512

Email: [centerSingapore@samonas.com](mailto:centerSingapore@samonas.com)

# SAMONAS OVERVIEW - TRAINING FOR PROFESSIONALS

This training teaches 4 methods to implement a Samonas Listening Plan (SLP):

## A. teamPower SLP- You specify the needs - the Samonas Team creates the SLP

### Prime Features

- Assessment based and goal oriented
- Practitioner sets the parameters
- Samonas designs the client's personal SLP for you
- Comes with client intake form and professional evaluation form
- Criteria for client & practitioner observations/feedback provided
- Initial evaluation of the client's listening needs
- Automatic calculation of listening time based on listener feedback
- Samonas optimizes the SLP while the program is in progress

### With clear advantages

- ✓ Easy immediate start of professional implementation
- ✓ All critical components are delegated to an experienced partner
- ✓ Ready-to-use protocols with all necessary forms and procedures
- ✓ All music selections and all levels of intensity are available
- ✓ We walk you through teamPower step-by-step during the training
- ✓ Avoids a time and resource consuming learning period
- ✓ Complimented by Samonas Interactive Communication Platform
- ✓ Attractive deals: off-set training costs by buying SLP packages

## B. universalModules SLP - Create an SLP based on example cases

### Basic features - for immediate practice after the training

- Assessment based and goal oriented
- Practitioner creates a personal SLP based on sample cases
- ART-of-Samonas sequence to evaluate the client's listening needs
- Automatic calculation of listening time based on user feedback
- Auto-selection of the optimal level of Spectral Activation
- Auto-transition to the next segment of the listening plan
- Auto-order and shipment of the music selections
- Optimized while your client moves through his SLP

### Additional options - for the experienced and qualified user

- Block-SLP - shipping all segments together
- Manual listening profile - alternative evaluation of listening needs
- Manual listening times

### Convincing advantages

- ✓ Immediate guided start of professional implementation
- ✓ 6-Steps-To-Success: Powerful guide for reliable results
- ✓ Graphical selection tables with pre-listening functions
- ✓ SLP-inPreparation function - allows to prepare an SLP free of charge
- ✓ All music selections & all level of intensity available
- ✓ Powerful auto-functions easing the workload of a busy professional
- ✓ Attractive deals: Off-set training costs by buying SLP packages
- ✓ Minimize administration with SLP-packages
- ✓ Enhanced flexibility that caters for unusual cases or contexts

## C. advancedListening SLP - The can-do-it-all method for the experienced professional

- Assessment based and goal oriented
- Practitioner creates a personal SLP without using a preset
- Manual listening time, manual level of spectral activation
- More than one music selection per segment, overlapping segments

- ✓ Qualify for the additional options with 3+ documented SLP's
- ✓ The optimum flexibility, adaptability and creativity
- ✓ Allows the development of almost any Samonas listening concept

## D. In-clinic listening with bone conduction - Samonas power tool for the advanced user

- Understand advantages and unique features of bone conduction
- Increase impact of listening without irritation and contra-reactions
- Increase treatment efficiency with intensive in-clinic listening

- ✓ Supports clients with difficulties to organize home listening
- ✓ Additional options for the experienced professional
- ✓ Gives extra power, which is advantageous for difficult cases

Together with theoretical knowledge

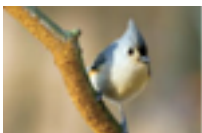
- Central and periferal auditory processing
- Hearing and listening - The active and passive systems
- Functions, skills and dysfunctions related to auditory processing
- What is auditory training? What results can be expected and why?
- Criteria for deciding when when to use auditory training
- The need to personalize listening in music and listening intensity

## The science of music and sounds

- Effective elements of music
- Emotional value of music
- System of Optimal Natural Structure (SONAS)
- Sounds in three-dimensional space
- Reference Point based auditory perception and recording

## And Samonas System Knowledge.

- Spectral Activation of Sounds (SAMONAS)
- Evaluation the optimal listening intensity
- Goal oriented selection of music
- Hands-on skills, examples, forms and tools
- Qualification course for Syl-4 & Th1-4

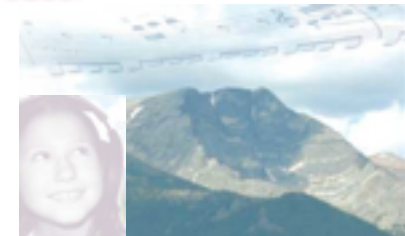


## Complimented by S.I.L.C.

## Samonas Integrated Learning Course

6 STEPS TO SUCCESS:

ASSESS  
PREPARE  
CHOOSE SLP  
INDIVIDUALIZE  
MANAGE  
DOCUMENT



- ✓ SILC-matriculation included with training!
- ✓ On-line resource for immediate answers & additional information
- ✓ Additional Support available

<http://www.samonasTraining.com>